



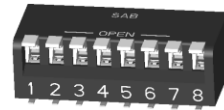
RoHS Compliant

SAB/YIKAI

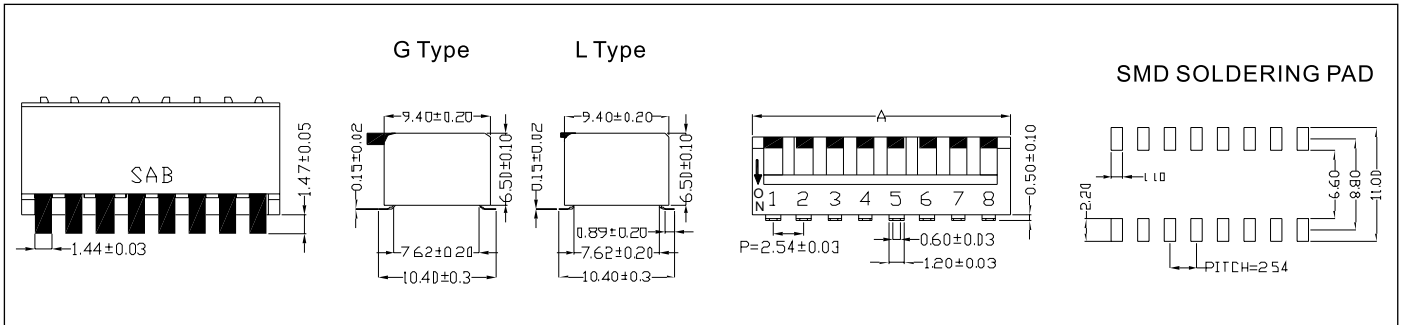
NPS/H Series-New Piano DIP Switch

Features

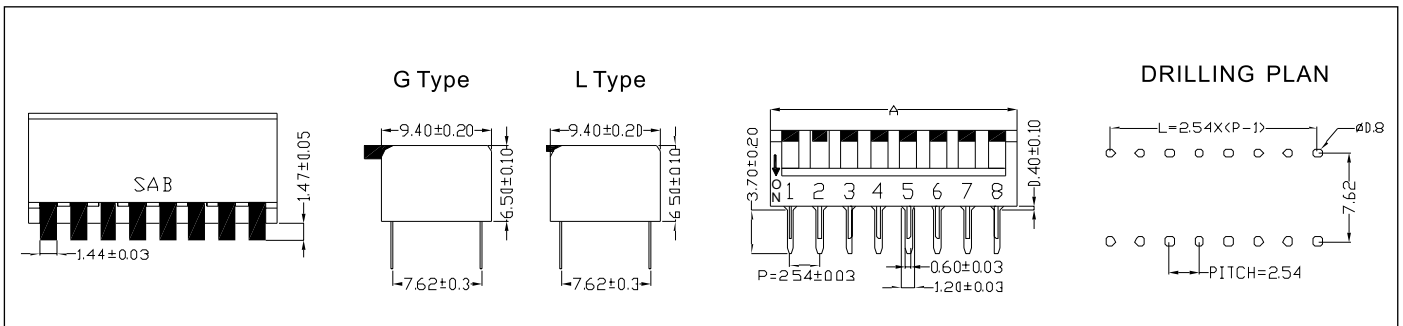
- ◆ Twin contact designed to ensure stable contact.
- ◆ Highly resistant to physical shock & vibration.
- ◆ All materials are UL 94V-0 grade, high temperature resistant plastic.
- ◆ Light click feeling.



NPS



NPH



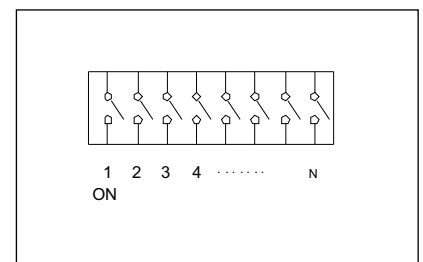
Specifications

- ◆ Contact Rating Switching25mA, 24VDC
- ◆ Contact Rating Non-Switching.....100mA, 50VDC
- ◆ Contact Resistance Initial50mΩ Max.
- ◆ Contact Resistance After Life Test100mΩ Max.
- ◆ Insulation Resistance100MΩ min at 500VDC
- ◆ Dielectric Strength500VAC/1 minute
- ◆ Operating Force1000g Max.
- ◆ Mechanical Life5,000 cycles
- ◆ Electrical Life5,000 cycles

Materials

- ◆ **Cove & Base:** High Temperature UL 94V-0 Thermoplastic, Black.
- ◆ **Actuator:** High Temperature UL 94V-0 Thermoplastic, White.
- ◆ **Terminal & Movable Contact:** Copper Alloy with Gold or Pure-Tin plated
- ◆ **Terminal:** Copper Alloy with Gold Plated or Pure-Tin.
- ◆ **Tape Sealed:** Polyimide Film.

Wiring Diagram



Soldering Information

- ◆ Hand Soldering Soldering Iron 30W at under 350°C/3 sec. Max. or at 270°C/5 sec. Max.
- ◆ Wave Soldering Temperature: 260°C/10 sec. Max.
- ◆ Reflow Soldering 260°C±5°C within 30 sec. In-line or Batch system.
- ◆ Keep all actuators in "OFF" position during soldering and cleaning process.

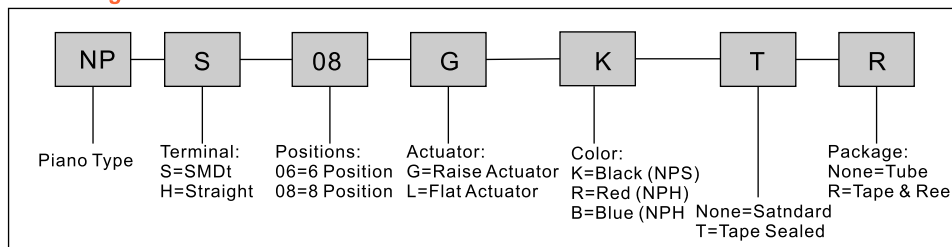
Packaging Information

- ◆ All DIP switches are shipped in Tube.
- ◆ NPS can be packed by Tape & Reel.
- ◆ Actuators all in "OFF" position.

Package

P/N	No.Of Pole	Dim. A	Quantity per Tube
NPS/H02	2	6.08mm	85
NPS/H03	3	8.62mm	61
NPS/H04	4	11.16mm	47
NPS/H05	5	13.70mm	38
NPS/H06	6	16.24mm	32
NPS/H08	8	21.32mm	24
NPS/H10	10	26.40mm	20
NPS/H12	12	31.48mm	16

Ordering Information



For more Information in Tape & Reel packaging. Please refer page 14 & 15 & 16.

All of RoHS compliant we providing will remove "LF" after "P/N"